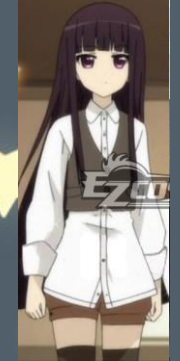


ATTITUDE OBSERVE ACCEPTANCE DETERMINATION BEAUTY STRENGTH CONNECTION WIT/CURIOSITY KNOWLEDGE WISDOM CONTROL



ALWAYS BE KIND ... LIFE HAS MANY PATHS AND YOU NEVER KNOW WHERE YOU'LL END UP ... IT'S OKAY TO LET GO, IT ALLOWS US TO MOVE FORWARD ... SOMETIMES IT'S DIFFICULT, BUT STAY DETERMINED ... BUT KEEP EXPLORING AND DISCOVERING ... STAY STRONG THROUGH THICK AND THIN ... OTHER PEOPLE CREATE A BETTER EXPERIENCE AND HELP YOU GROW ... EVEN THE IMAGINARY IS IMPORTANT, FOR WHO CAN SAY WHAT IS REAL? ... NEVER STOP LEARNING AND STRIVE TO UNDERSTAND THE WORLD AROUND YOU ... AND USE IT TO THE BEST OF YOUR ABILITY. ALL YOU CAN DO IS YOUR BEST ... YOU'RE THE ONLY ONE THAT HAS CONTROL OVER YOUR LIFE. YOU'RE MORE POWERFUL THAN YOU REALIZE

LESSONS

- [AQUA] — BE KIND
- JAMIE — WITHOUT OTHER PEOPLE, THE WORLD WOULD BE LONELY
- MAKOTO — IT'S OKAY TO LET GO, IT ALLOWS US TO MOVE FORWARD
- CATHERINE — DISCOVER, EXPLORE, GET OUTSIDE OF COMFORT ZONE, CREATE, ENJOY THE LITTLE THINGS
- LEVI — STAY DETERMINED
- CHRIS — STRENGTH TO DO
- [ZEN] — STRENGTH TO WITHHOLD, SELF-RESTRAINT
- CHIYO — GROWTH, LOVE, TRUST, FORGIVENESS, PATIENCE
- KOKKURI — IMAGINATION, THE UNREAL, QUESTION EVERYTHING, WIT
- DELILAH — LEARN
- [GMINI X2] — UNDERSTAND
- SAMSON — WISDOM, USE LEARNED INFO CORRECTLY
- [PISCES] — DON'T BE STUPID, DO YOUR BEST
- FAUBLE — GAIN CONTROL OF LIFE AND HAPPINESS
- FREY — YOU ARE A PART OF AN UNSTOPPABLE GOD

ALWAYS BE KIND ... OTHER PEOPLE CREATE A BETTER EXPERIENCE ... BUT IT'S OKAY TO LET GO, IT ALLOWS US TO MOVE FORWARD ... BUT KEEP EXPLORING AND DISCOVERING ... SOMETIMES IT'S DIFFICULT, BUT STAY DETERMINED ... YOU HAVE TO STAY STRONG TO DO GREAT THINGS ... SOMETIMES YOU'LL HAVE TO HAVE THE STRENGTH TO REFRAIN FROM DOING HARM ... BUT THROUGH ALL, ONE GROWS ... EVEN THE IMAGINARY IS IMPORTANT ... NEVER STOP LEARNING ... BUT STRIVE TO TRULY UNDERSTAND WHAT IS LEARNED ... AND USE IT TO THE BEST OF YOUR ABILITY ... BECAUSE ALL YOU CAN DO IS YOUR BEST ... YOU'RE THE ONLY ONE THAT HAS CONTROL OVER YOUR LIFE ... BECAUSE YOU'RE MORE POWERFUL THAN YOU REALIZE

FAUBLE JUDGEMENT // CREATION

MISCHIEVOUS
STOPS THE CHAOS

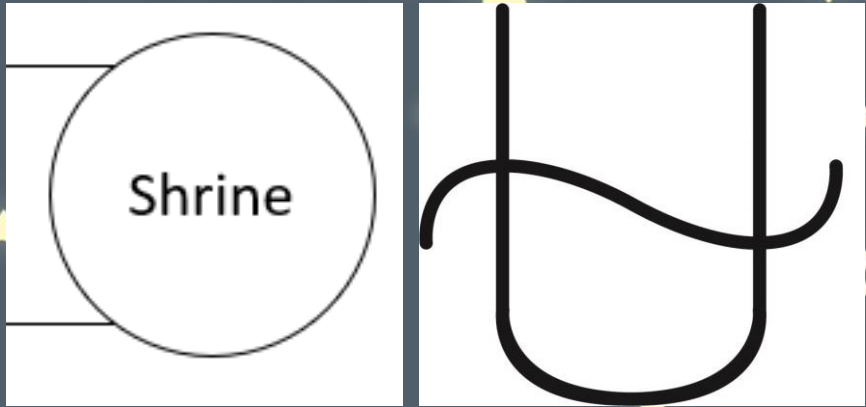


BASIC PERSONALITY:

MYSTERIOUS AND MISCHIEVOUS, BUT
GUIDANCE AND FATHERLY; MAKES DAD
JOKES



HAVARD



GOOD SPIRIT



FATHER FIGURE
 DAD JOKES
 HANGS OUT AT BAR
 RAISES FREY

BASIC PERSONALITY:
 CLEVER, MISCHIEVOUS, BUT
 COMPASSIONATE



RIN

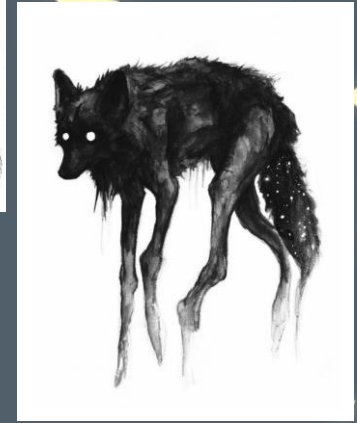
GHOSTLY
SHOULDN'T
EXIST

STARTS
TURNING INTO
DRAGON

CREEPY



GHOSTS



RIN
“MONSTERS DON'T SLEEP
UNDER YOUR BED, THEY SCREAM
INSIDE YOUR HEAD”

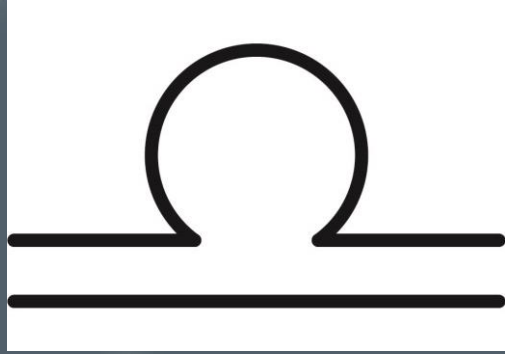
“IT'S ALL JUST SHAPES”
“THOUGH YOU MAY BE LUCKY
TIME AND TIME AGAIN, THE
WOLF NEED ONLY BE LUCKY
ONCE”

“A GENTLEMAN IS SIMPLY A
PATIENT WOLF”

BASIC PERSONALITY:

SILENT, GHOSTLY, UNSURE IF GOOD OR BAD

SAMSON MORAN



“ITS LIKE DRINKING COFFE.

YOU KNOW WHAT COFFEE IS, A DELIGHTFUL, WARM BEVERAGE.

YOU UNDERSTAND THAT IT HAS CAFFEINE AND CAN PUT SOME PEP IN YOUR STEP.

BUT WISDOM IS NOT DRINKING TOO MUCH BECAUSE OF THE ADVERSE AFFECTS.

YOU SEE?”

HAPPY
BARISTA
KIND
WISE

WISDOM



WISDOM

“DON'T BE STUPID”

“SPEAK SOFTLY AND CARRY A BIG STICK”

“NEVER GO TO SLEEP ANGRY”

BASIC PERSONALITY:

MIKETSUKAMI - HE'S PATIENT AND JOVIAL

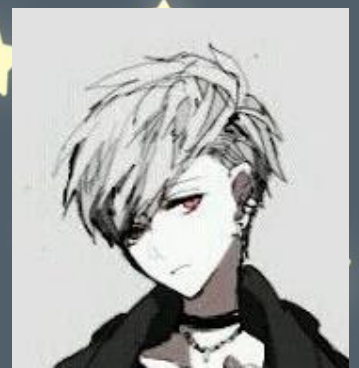
KYOUYA - A LITTLE SCARY SOMETIMES



COLORS



HAIR



FOOD



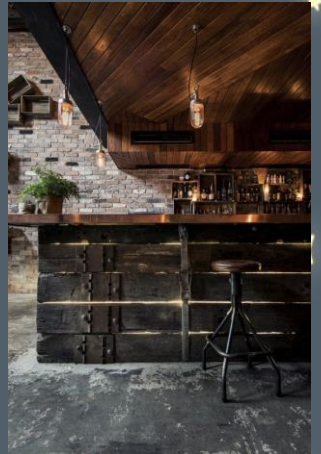
PLANT

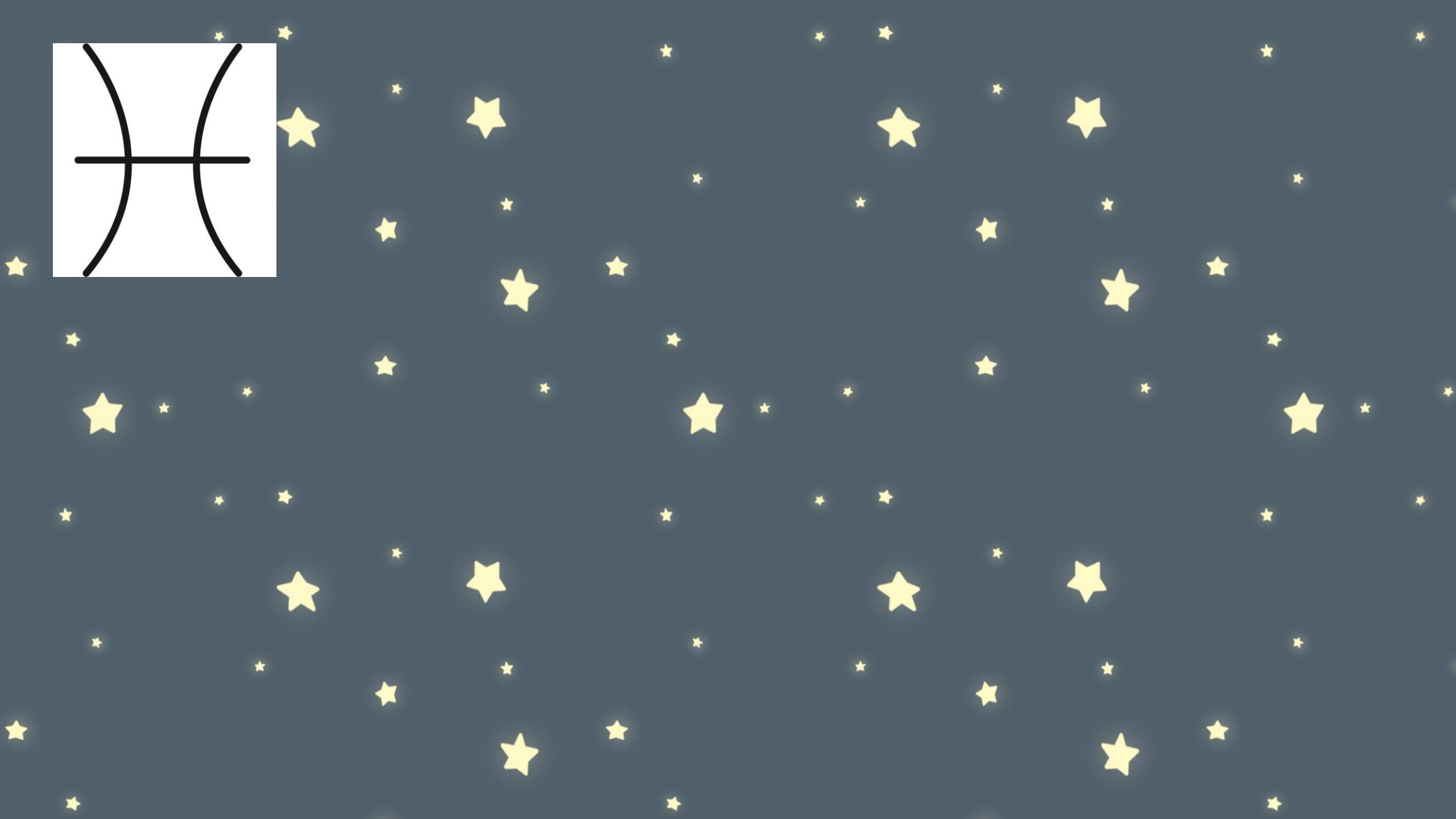
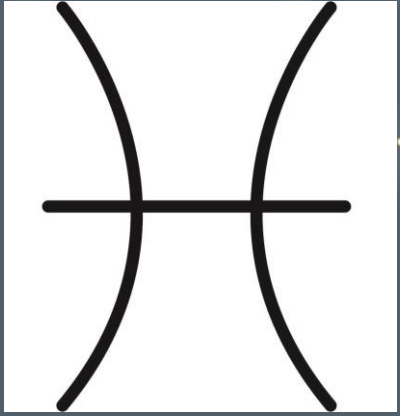


ORENDA



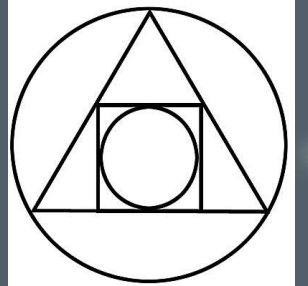
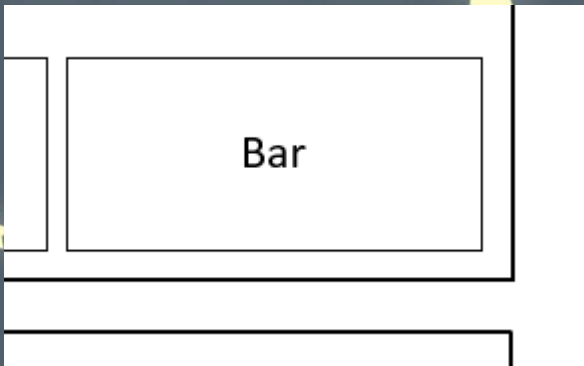
SPACE





DELILAH

UNDERSTANDING



UNDERSTANDING

“STEPS TO ENLIGHTENMENT BRIGHTEN THE WAY, BUT THE STEPS ARE STEEP. TAKE THEM ONE AT A TIME”

“DON'T OPEN UNWANTED DOORS YOU CAN'T CLOSE”

“SOMETHING WEIRD MIGHT JUST BE SOMETHING FAMILIAR VIEWED FROM A DIFFERENT ANGLE.”

“WHAT IS NORMAL FOR THE SPIDER IS CHAOS FOR THE FLY”

VOODOO
DOLLS

POTIONS

TAROT

BOOKS

DREAMS

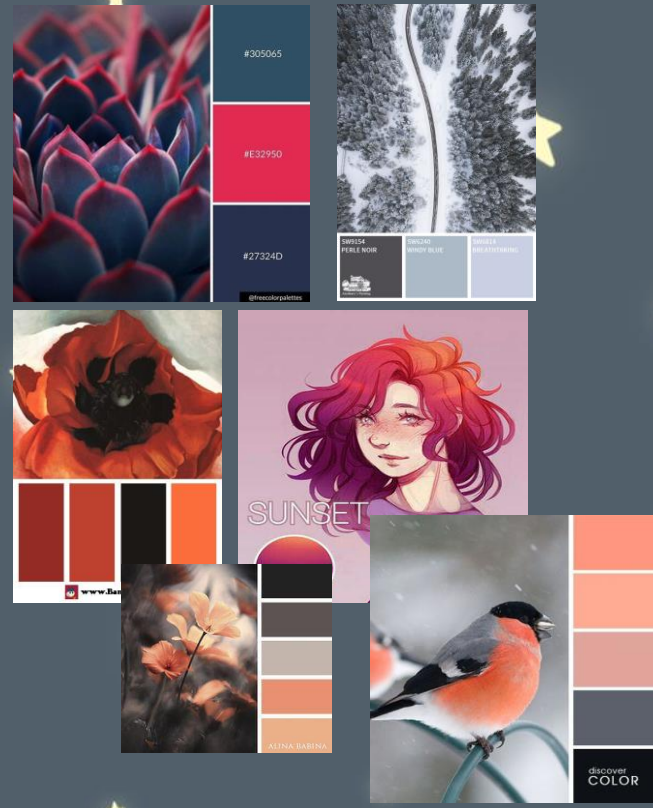
ILLUSIONS

BASIC PERSONALITY:

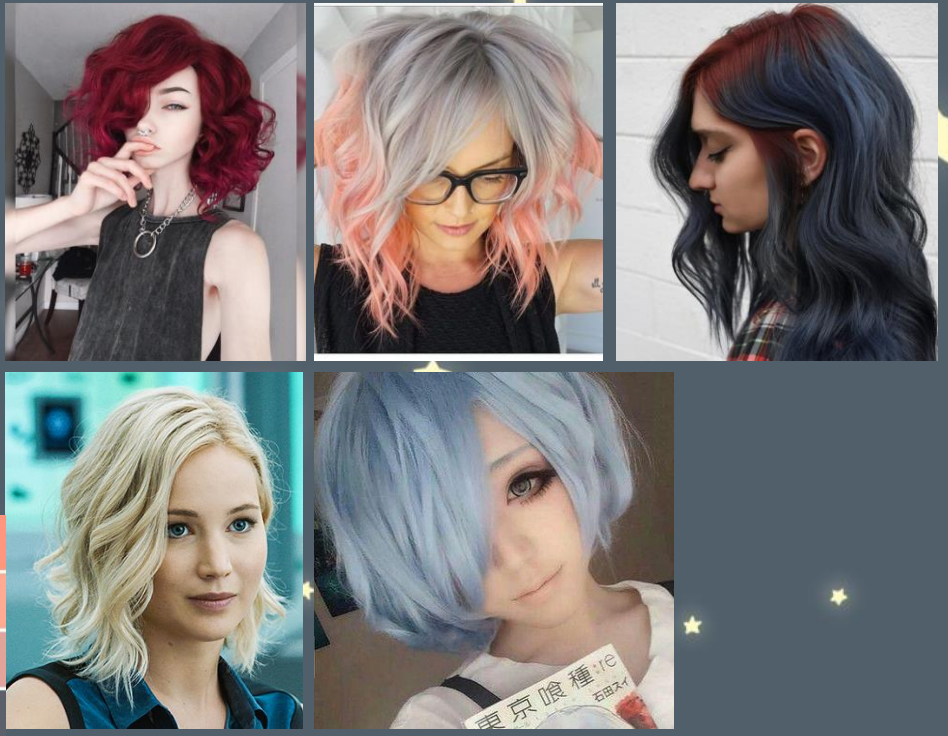
RIRICHIYO - ROUGH AROUND THE EDGES



COLORS



HAIR



FOOD



PLANT

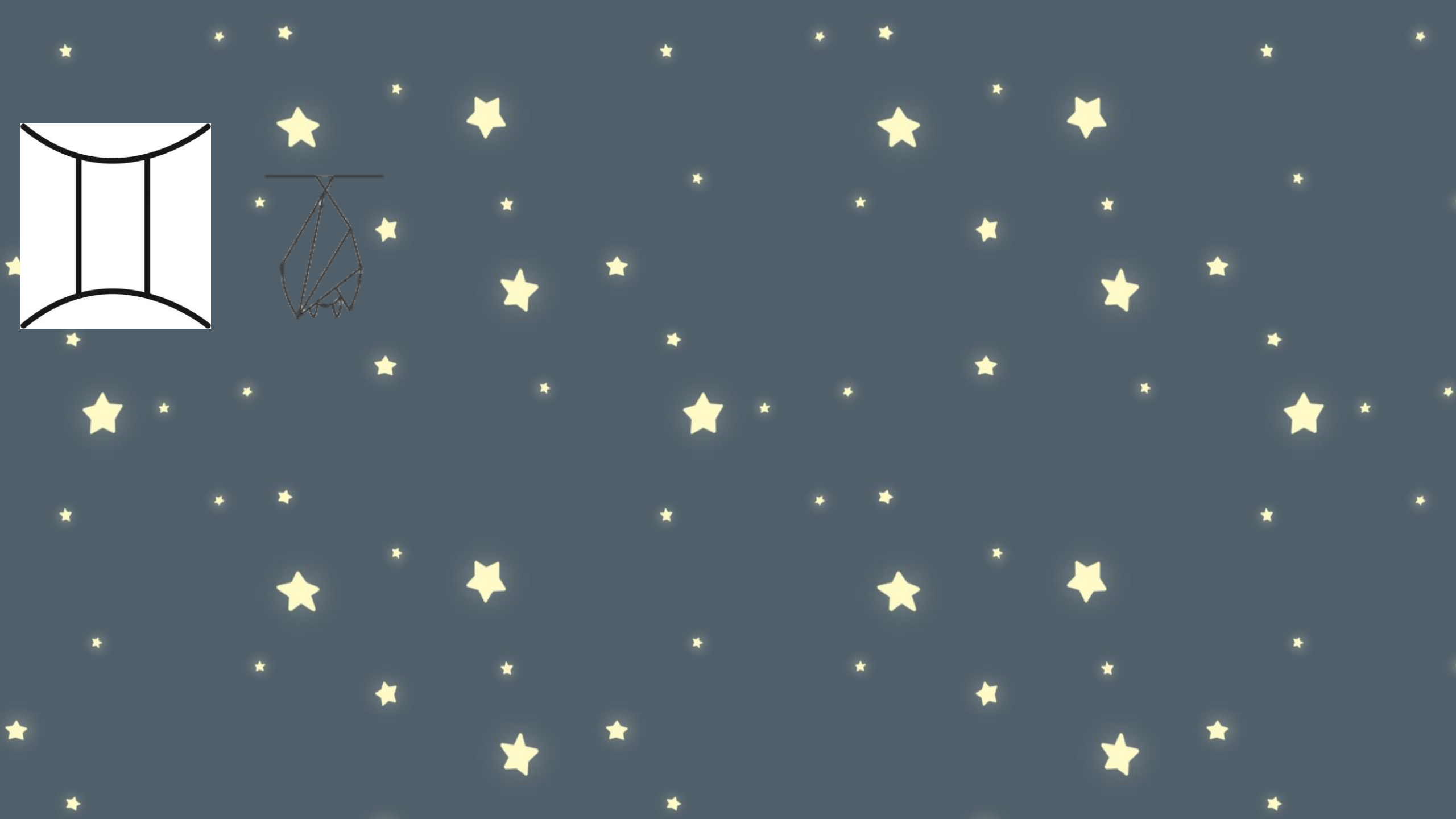
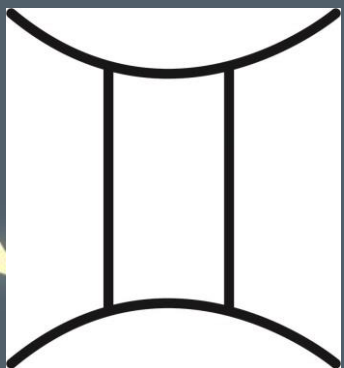


ORENDA



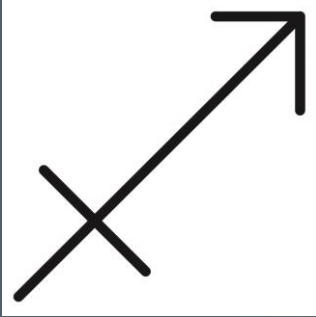
SPACE



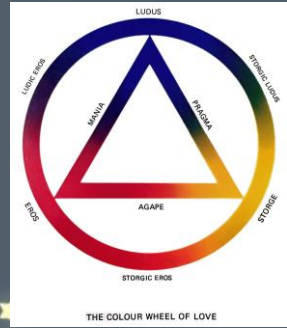
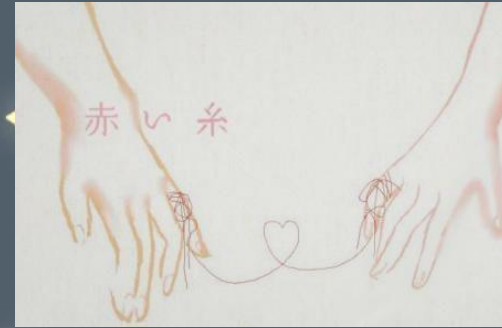


CHIYO

Apartment



MERCY // LOVE



PINK
SWEATERS
DRESSES
COFFEE
FLOWERS
BOOKS

MERCY

“LET ALL THAT YOU DO BE DONE IN LOVE”

“IT COSTS NOTHING TO BE KIND”

“I DON'T KNOW WHERE I'M GOING BUT I'M GOING”

“EVERYTHING IS AN ADVENTURE”

BASIC PERSONALITY:

TAMAKI - NICE GUY, SAD BACKSTORY, STUPID ON THE SURFACE, BUT SMART AND KIND



COLORS



HAIR



FOOD



SPACE

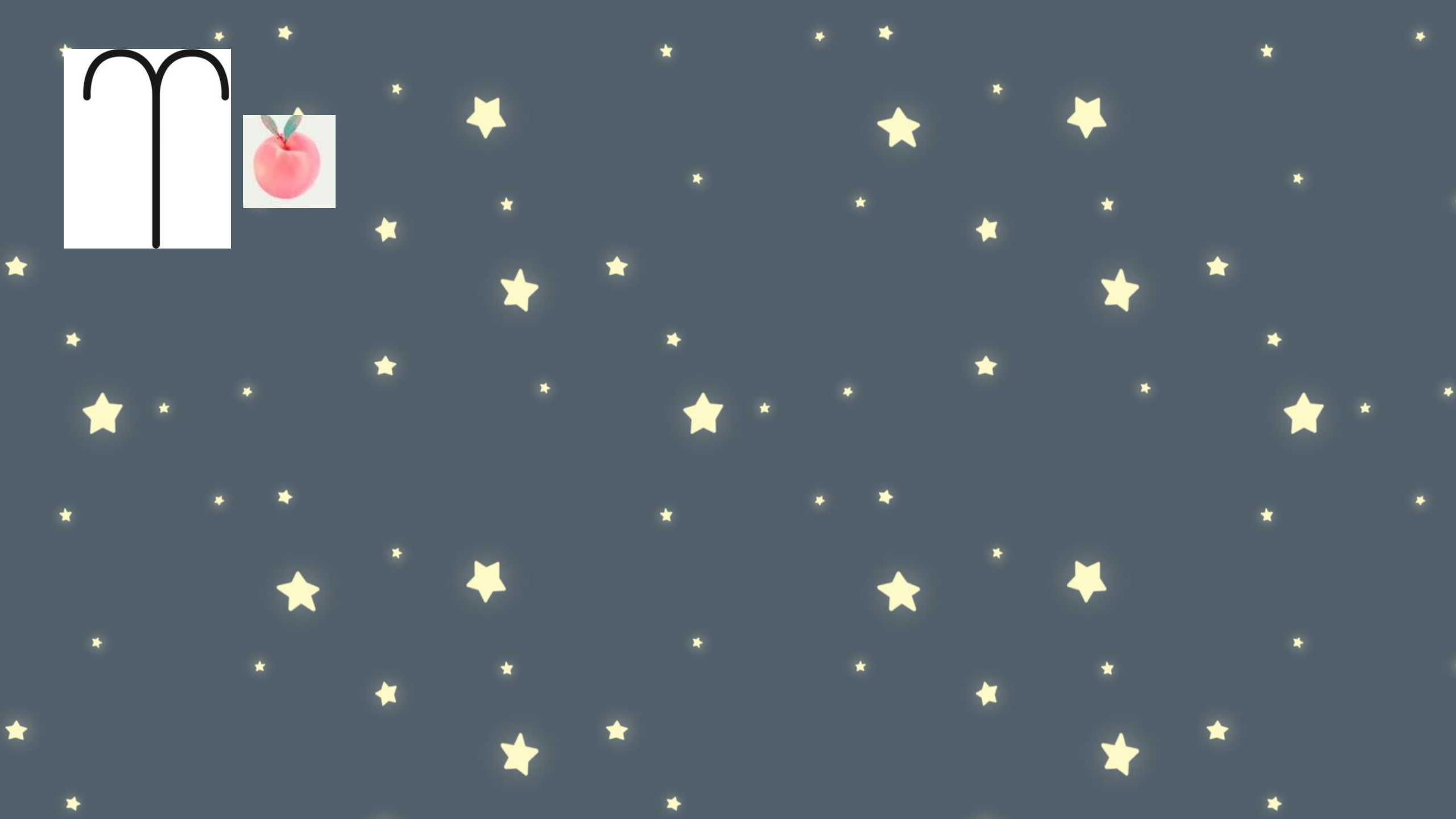
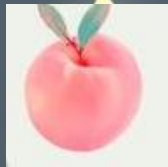
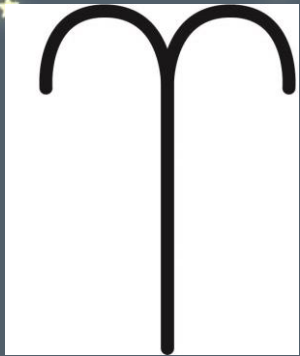


PLANT



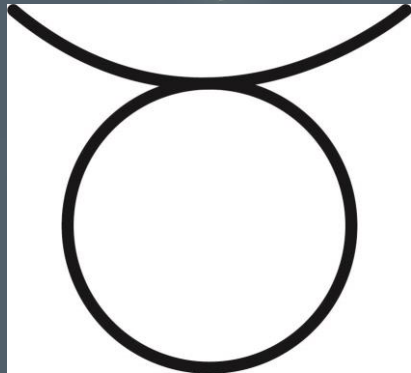
ORENDA





CHRIS VINSON

STRENGTH



LUMBERJACK
MANLY

STRENGTH

“PAIN IS ESSENTIAL TO FEELING ALIVE”

“THE MASTER HAS FAILED MORE TIMES THAN THE BEGINNER EVEN TRIED”

BASIC PERSONALITY:

ROUGH AND GRUFF, BUT MAKES JOKES AND TEACHES LESSONS, FATHERLY

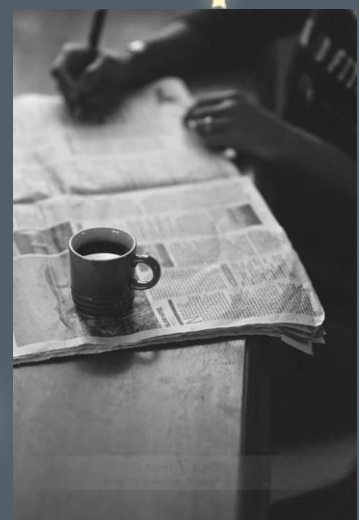


COLORS



HAIR

FOOD

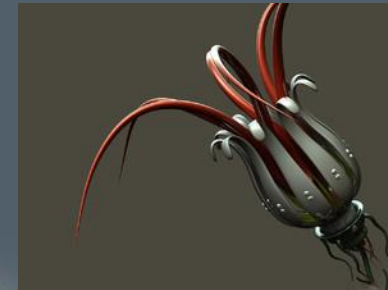
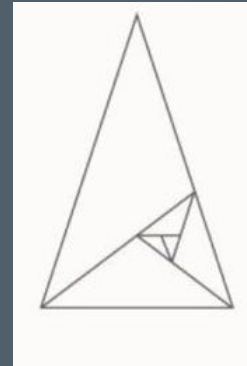
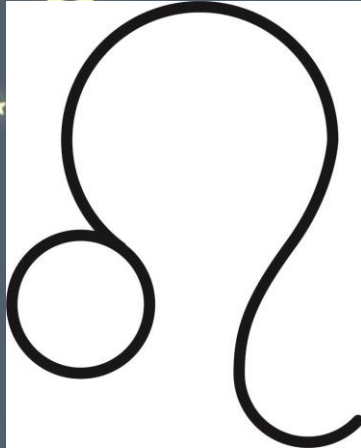
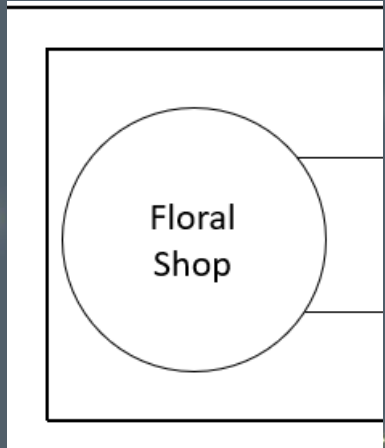


SPACE



CATHERINE LYNWOOD

BEAUTY



PRETTY
ENJOYS CREATING THINGS
SINGS

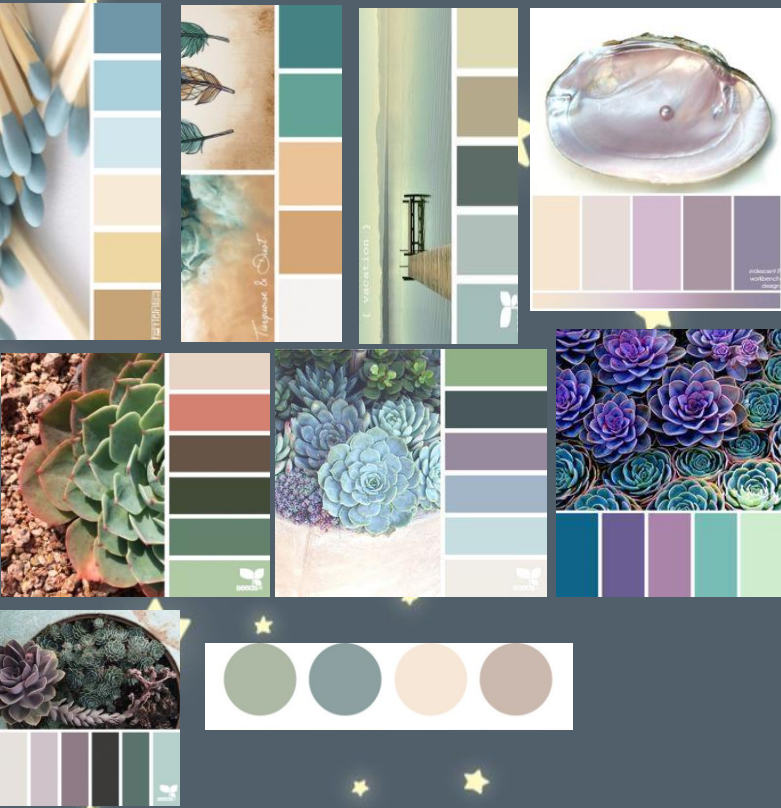
BEAUTY

“NEVER STOP CREATING”
“WITHOUT OTHERS, WE HAVE NO PURPOSE”
“FIND THE BEAUTY IN EVERYDAY”

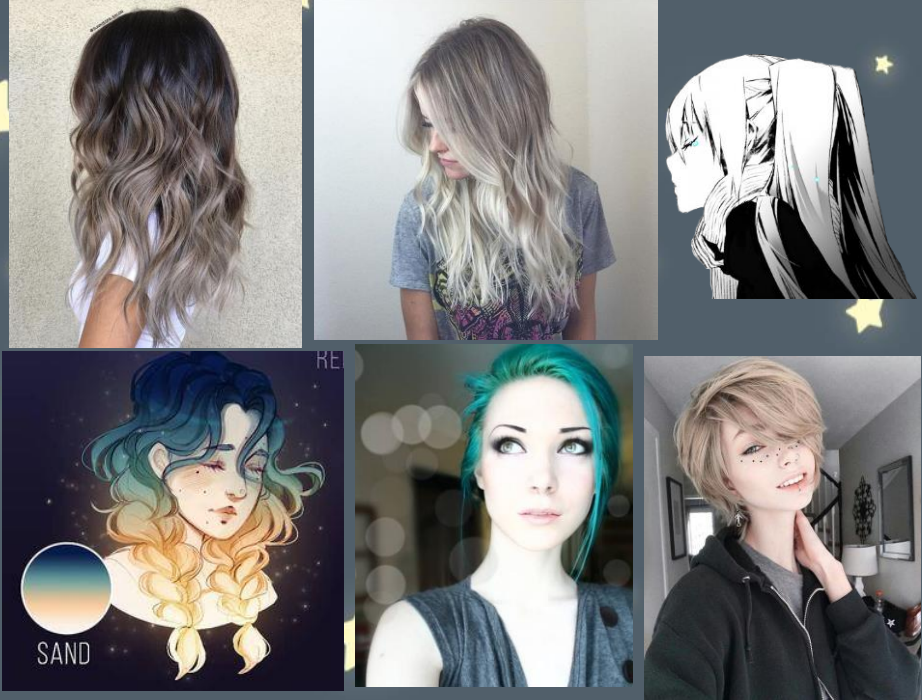
BASIC PERSONALITY:
BOHO AND KIND OF BASIC, A LITTLE REBELLIOUS



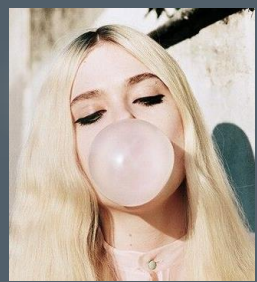
COLORS



HAIR



FOOD



PLANT

ORENDA



SPACE



LEVI YORK



VICTORY



VIDEO GAMES

PUZZLES

TABLETOP GAMES

WEB

RIDDLES

VICTORY

“TIME YOU ENJOY WASTING IS NOT TIME WASTED”

“SUCKING AT SOMETHING IS THE FIRST STEP TO BEING SORTA GOOD AT SOMETHING.”

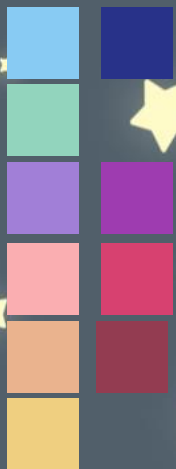
“I CAN'T GO BACK TO YESTERDAY, I WAS A DIFFERENT PERSON THEN”

BASIC PERSONALITY:

WATAMOTE — DEPRESSING BUT RELATABLE

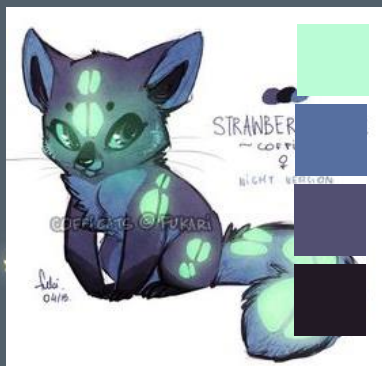


COLORS



HAIR

FOOD

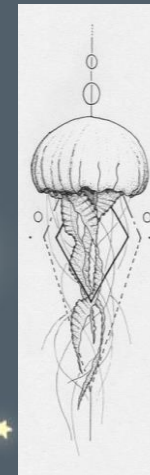
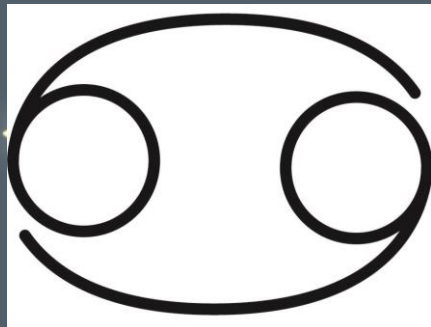


SPACE



MAKOTO

SINCERITY//OBSERVATION



CUTE
SWEETS
QUIET
HONEST

SURRENDER

“HONESTY IS THE BEST POLICY”

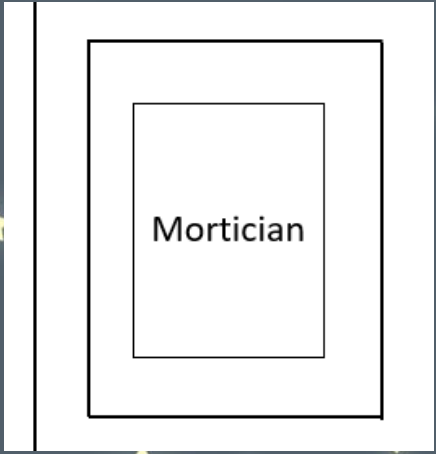
“THIS IS LITERALLY MY FAVORITE CUP. NOW ITS GONE FOREVER. ITS NOT REAL AND I DON'T CARE ABOUT IT ANYMORE”

BASIC PERSONALITY:
CUTE AND QUIET, LIKES SWEETS



JAMIE CAULFIELD

CONNECTION



BLUNT
TALKS TO
CHIYO ABOUT
RELATIONSHIPS
MORTICIAN
SCIENTIST
STUDENT

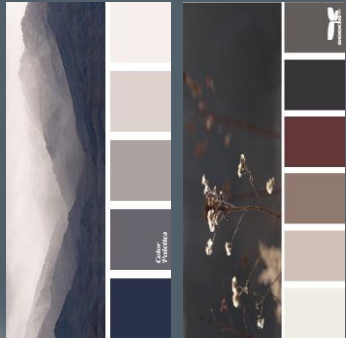
BARISTA
CATS

CONNECTION
"TO LIVE LIFE, YOU NEED PROBLEMS. IF
YOU GET EVERYTHING YOU WANT THE
MINUTE YOU WANT IT, THEN WHAT'S THE
POINT IN LIVING?"
"A HEARSE BEARS NO TRAILER HITCH"

BASIC PERSONALITY:
L - BLUNT, BUT COOL AND INTELLIGENT



COLORS



HAIR



FOOD

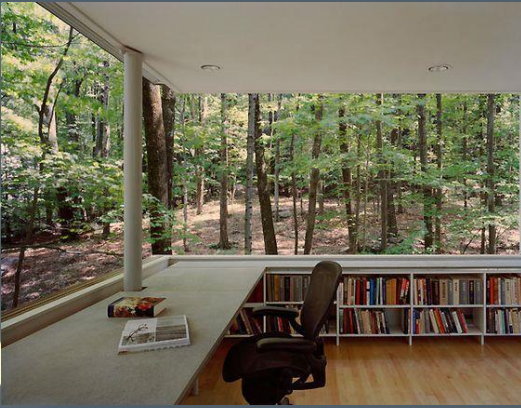


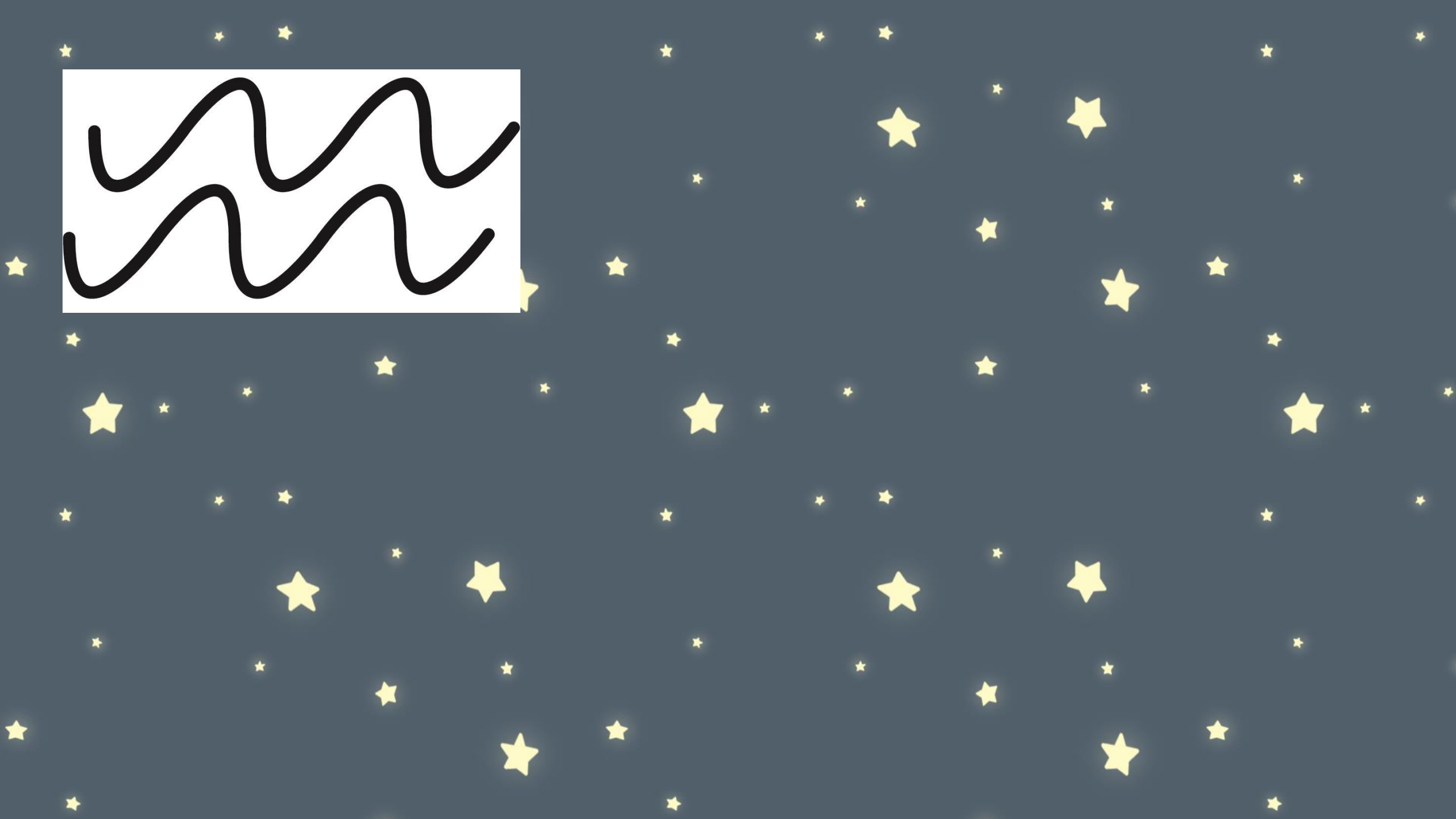
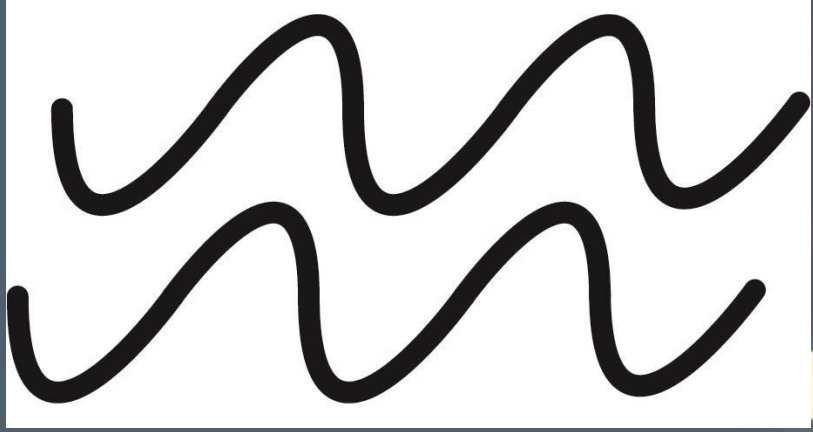
PLANT



ORENDA

SPACE





FREY RAPTURE

EARTH//HUMAN

ASTRONOMER

RAISED BY GOD

BAD PAST

WANTS TO FIND TRUTH

RIN INFLUENCED TO KILL PARENTS

ASTROLABE

ARMILLARY SPHERE

COMPASS

SEXTANT

TELESCOPE

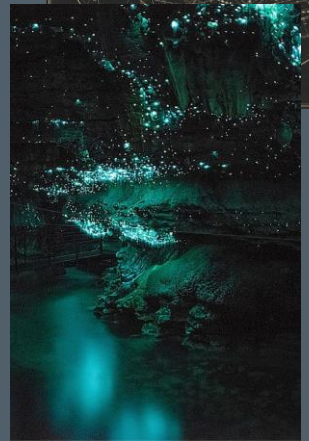
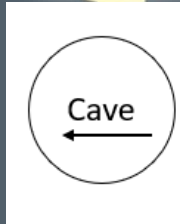
MAP

ORRERY

NOCTURNAL INSTRUMENT

LIFE DIRECTION

“I KEEP WAKING UP, BUT I DON'T RECALL EVER GOING TO SLEEP”

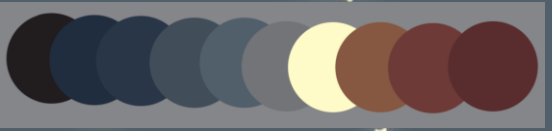


BASIC PERSONALITY:

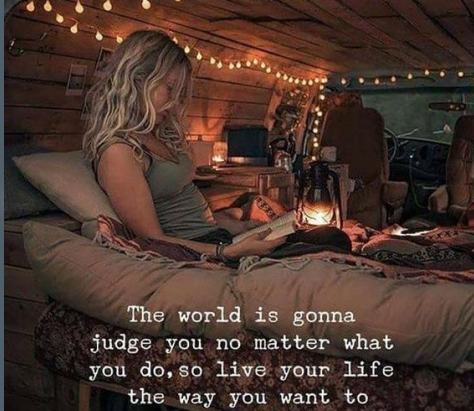
MAE - “ALL JUST SHAPES”

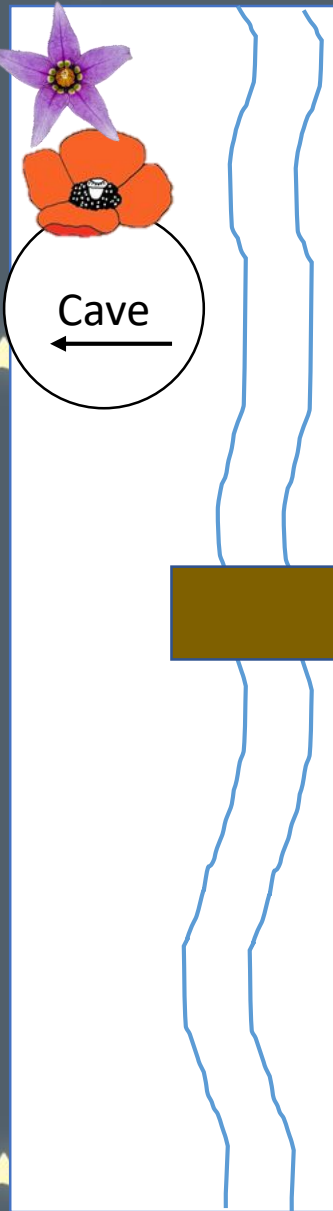
QUESTIONS EVERYTHING, HAS MOMENTS OF INSANITY

COLORS



SPACE





Bakery Brewery Bar

Mortician

Floral Shop Garden Shrine

Courthouse

Apartment Apartment Café

Courthouse

Bar

Café

Shrine

Brewery

Apartment

Floral Shop

Bakery

Apartment

Cave
↓

Mortician

